

St Mary's Holiday Club

Holiday Planner

Dear parents and guardians,

We know how hectic life is, so please print this page and mark in the days you have booked in with us. Below is our holiday guide which will help make your child's time with us as enjoyable as possible.

Superkids' Holiday Guide

- Please notify us if you cannot arrive by 9.30am for breakfast.
- **We have some trip days this holiday, so please bring backpack for their packed lunch box and water bottle.**
- **No nuts** inside packed lunches, including spreads like peanut butter or Nutella and chewy bars please.
- Refillable water bottle with your child's name on.
- **Check the planner on page 2 and see what your child may need for that day e.g. clothing or arrival/collection times.**
- Any medication must be handed into the team (medication form required)
- **Check the weather, rain jacket day, sunhat or suitable footwear?**
- Sun cream? Please leave a bottle of sunblock/sunscreen inside your child's pack lunch box or bag
- **Running late? Please put this number in your phone: 07787 734432 so you can call or text the club directly.**

Breakfast and afternoon snack included

Other information:

All places must be pre-booked. Drop in sessions cannot be accepted. If you require additional sessions to your original booking, please email us.

For the discounted rate, sessions must be pre- booked and paid for by cut-off date

Monday 20th July 2026

Payment information:

We Accept

- Superkids accept a wide range of childcare vouchers.
- Paying with the Government Tax Free voucher scheme? Please provide us with your payment reference.
- Cheque payments are accepted.
- We accept online bank transfers; reference details can be found below.

We Do Not Accept

- Superkids currently do not accept card payments. This is so we can offer the best price to all our parents who use our services.
- Cash is not accepted at our clubs for security reasons

Our details:

Superkids Club Ltd

Sort code: 09-01-28

AccountNumber: 37043040

Payment reference codes:

P and your child's name

We look forward to seeing you.

Pick up and drop off times

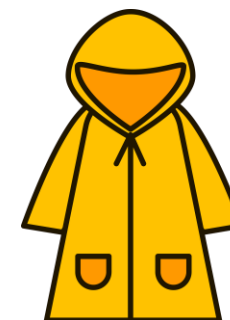
The club is open from 7:30am

Breakfast from 7:30 – 9:30am.

Snack time from 3.30pm – 4pm

Collection from 4pm -6pm

Club closes at 6pm



SUMMER ACTIVITY SCHEDULE

Highlighted in red are items you may need to bring for the activity or other charges

Week 1: 20th July - 24th July Puzzle Quest
Thurs 23 rd – Treasure Hunters Orienteering Trip Day. Arrive by 9am. Collect after 5pm.
Friday 24 th – Brain Booster

Week 2: 27th July to 31st July Around The World
Mon 27 th – Europe Explorer
Tues 28 th – Discover Australia
Weds 29 th – African Adventure £3 extra
Thurs 30 th - Amazing Asia
Friday 31 st - Americas Day



Week 3: 3rd to 7th August Future World
Mon 11 th – Robot Revolution
Tues 12 th – Future City 2050
Weds 13 th – Alien Friends
Thurs 14 th – Future Tech Lab
Friday 15 th – Future Tech Lab Science Museum £5 extra. Trip Day. Arrive by 9am. Collect after 5pm.



Week 4: 10th to 14th August Art Explosion
Mon 10 th – Mega Art Project
Tues 11 th –Dulwich Picture Gallery £5 extra. Trip Day. Arrive by 9am. Collect after 5pm.
Weds 12 th – Tye Dye T-shirts £4 extra.
Thurs 13 th - Messy Makers
Fri 14 th - Graffiti Art



Week 5: 17th to 19th August Sports Remix
Mon 17 th – Championship Games
Tues 18 th – Water Fun Day. Bring change of clothes and towel.
Weds 19 th – Bungee Football Inter-Club Tournament. £5 extra.



St Mary's holiday club is closed from 20th to 31st August
Breakfast and After school club will be open from Tuesday 1st September.
We look forward to seeing you again in the October half term.